

# VPL-S200 Series

Data Projectors

# SONY



VPL-SW235 VPL-SW225  
VPL-SX235 VPL-SX225



BrightEra™

HDMI

# Deliver Powerful Presentations Even in a Limited Space with Short-throw Projectors



Sony's VPL-S200 Series short-throw projectors improve ease of use in the education and business.

In its latest short-throw projector line-up, Sony has added two higher-brightness models, delivering 3200 lumens XGA (VPL-SX235) and 3000 lumens WXGA (VPL-SW235).

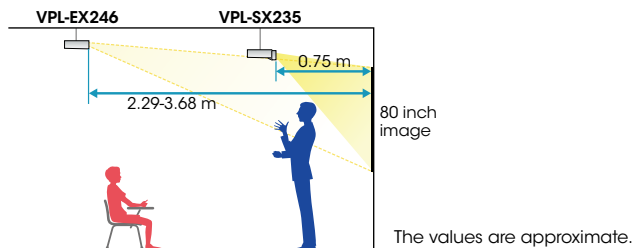


## FEATURES

### Simple Installation

#### Short Projection Distance

Each Projector is equipped with a short focal length lens, which makes it possible to project images from a shorter distance.



The presenter is not distracted by the projected image, and it's easier for the audience to see the projected image because shadow of the presenter on the screen is minimized.



With conventional models (Normal throw)



With the VPL-S200 Series (Short throw)

### "Blend-in" Design

These projectors fit into any interior with their simple, stylish, and modern design.



### High Image Quality

#### High Brightness

With a brightness of 3200 lm / 3000 lm\*, the projected image can clearly be seen, even in a bright room. Users do not have to turn down the light or pull closed the curtains or blinds each time they use the projector.

\* VPL-SX235: 3200 lm; VPL-SW235: 3000 lm

Previous short slow



VPL-SW235, VPL-SX235



Simulated images

### Natural and Vivid Color

A 3LCD projection system enables each projector to present bright and natural images.

This is achieved by combining an advanced generation of inorganic LCD panels that utilize Sony's BrightEra™ technology with the 3LCD projection system.



### Constant Brightness

Constant Brightness is a new lamp technology to keep brightness constant\*1 at 60% ~ 70% and deliver fine picture quality over a long period of time.\*2

\*1 Outputs light at a specific brightness level. It is a technical specification that projector brightness gradually reduces over time due to the effect of other factors.

\*2 5 hours/day, 20 days/month, 9 month/year.

### Constant Brightness ON



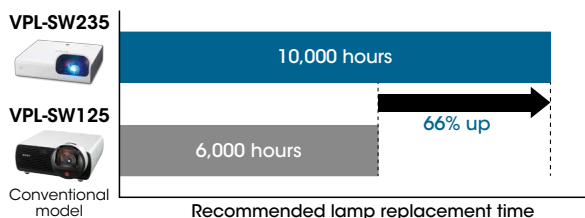
Simulated images

### Good TCO, Energy-efficient Design

#### Long-lasting Lamp

By incorporating a high-performance lamp and advanced lamp-control technology, these projectors deliver an extremely long lamp replacement time of 10,000 hours\*.

\* Approximate recommended period, in low mode.



\* Lamp mode: low. \*Comply with IEC61947 standard.

### Lamp Dimming Function

After 10 seconds of a static signal feed, the lamp dims by approximately 15%. After a configurable set period of time this function dims the lamp to as low as approximately 30% of original brightness.

## Advantage of Usage

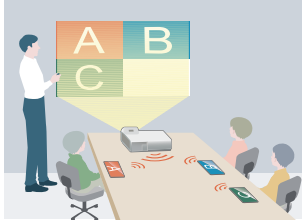
### Network Presentation

The wireless presentation capability makes it easy to present files from a tablet device or smartphone. Users can project JPG, PDF, and PowerPoint Files and other supported formats. Also, presentations can be projected from PC on the network.

\* Up to eight users (seven for wireless) can connect to one projector.



\* The application for tablet device and smartphone is provided by Pixelworks. For details and to download, visit: <http://PWPresenter.pixelworks.com>

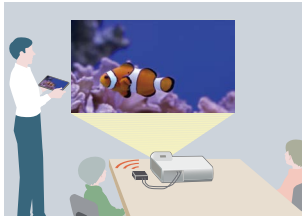


Compatible Operating System:  
Windows, Mac, Android, iOS

### Miracast™ Wireless Display IM10

Miracast\* is a peer-to-peer wireless screencast standard formed via Wi-Fi Direct connections (similar to Bluetooth).

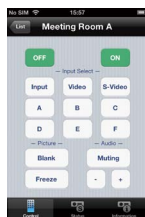
\* Miracast is an option unit.



Miracast Wireless Display IM10  
compatible device only

### Remote Control for iPhone/iPad

Projector Remote is a simple remote control app for Sony's projectors. Individual and networked projectors can be controlled by this remote app. Supported functions include Power On/Off, Input Select, Blank, Freeze, Muting, and Volume +/- Keys.



### USB Media Viewer

By attaching a USB memory device\* to the VPL-S200 Series USB connector, users can directly project data files stored on a USB memory device, without requiring a PC.

Supported file formats are JPG, BMP, PNG, TIF, and GIF.

\* USB memory device is not included.

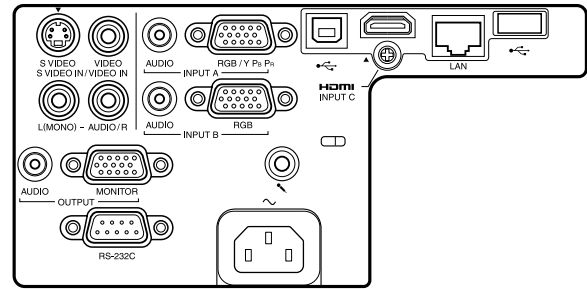
### USB Display

Users can display pictures and audio\* with one USB cable. This is a convenient and easy way to connect to a projector.

\* There is a time lag in video and audio.

## CONNECTOR PANELS

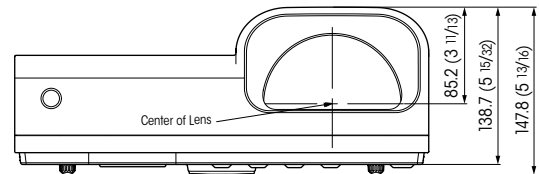
VPL-SW235 / VPL-SW225  
VPL-SX235 / VPL-SX225



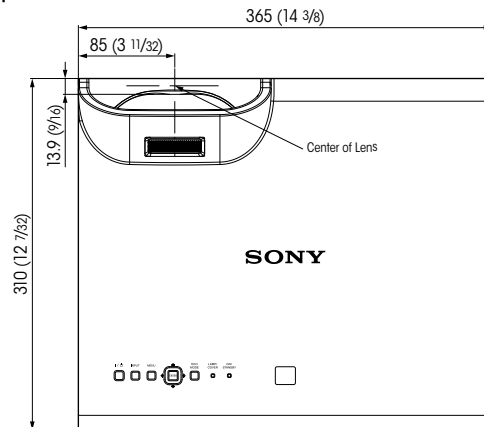
## DIMENSIONS

Unit: mm (inches)

Front



Top



## OPTIONAL ACCESSORIES



**LMP-E212**  
Projector Lamp (for replacement)



**IFU-WLM3**  
USB wireless LAN module



**IM10**  
Miracast Wireless Display  
Miracast Wireless Display IM10 is provided by Sony Mobile communications.  
<http://www.sonymobile.co.jp/>

# SPECIFICATIONS

		VPL-SW235	VPL-SW225	VPL-SX235	VPL-SX225
Display system		3 LCD system			
Display device	Size of effective display area	0.59" (15 mm) x 3 BrightEra Aspect ratio: 16:10		0.63" (16 mm) x 3 BrightEra Aspect ratio: 4:3	
	Number of pixels	3,072,000 (1280 x 800 x 3) pixels		2,359,296 (1024 x 768 x 3) pixels	
Projection lens	Focus	Manual			
	Throw ratio	0.46:1			
Light source		Ultra high pressure mercury lamp 210 W type			
Recommended lamp replacement time*1		4000 H / 6000 H / 10000 H (Lamp mode: High / Standard / Low)			
Filter cleaning cycle*1		Max. 7000 H			
Screen size		57" to 103" (0.55 m to 1.04 m)		60" to 110" (0.55 m to 1.04 m)	
Light output (Lamp mode: High / Standard / Low)		3000 lm / 2100 lm*2 / 1700 lm*2	2600 lm / 2100 lm*2 / 1700 lm*2	3200 lm / 2400 lm*2 / 1900 lm*2	2700 lm / 2000 lm*2 / 1600 lm*2
Color light output (Lamp mode: High / Standard / Low)		3000 lm / 2100 lm*2 / 1700 lm*2	2600 lm / 2100 lm*2 / 1700 lm*2	3200 lm / 2400 lm*2 / 1900 lm*2	2700 lm / 2000 lm*2 / 1600 lm*2
Contrast ratio (full white / full black)*3		3000:1			
Displayable scanning frequency	Horizontal	14 kHz to 93 kHz			
	Vertical	47 Hz to 93 Hz			
Display resolution	Computer signal input	Maximum display resolution: UXGA 1600 x 1200 dots*4			
	Video signal input	Panel display resolution: 1280 x 800 dots		Panel display resolution: 1024 x 768 dots	
Color system		NTSC3.58, PAL, SECAM, NTSC4.43, PAL-M, PAL-N			
Keystone correction		Vertical: Max. +/- 10 degrees			
OSD language		24-languages (English, Dutch, French, Italian, German, Spanish, Portuguese, Turkish, Polish, Russian, Swedish, Norwegian, Japanese, Simplified Chinese, Traditional Chinese, Korean, Thai, Vietnamese, Arabic, Farsi, Finnish, Indonesian, Hungarian, Greek)			
Computer and video signal input/output	INPUT A	RGB / Y Pb Pr input connector: Mini D-sub 15-pin (female), Audio input connector: Stereo mini jack			
	INPUT B	RGB input connector: Mini D-sub 15-pin (female), Audio input connector: Stereo mini jack			
	INPUT C	HDMI input connector: HDMI 19-pin, HDCP support Audio input connector: HDMI audio support			
	S VIDEO IN	S video input connector: Mini DIN 4-pin, Audio input connector: Pin jack (x2) (shared with VIDEO IN)			
	VIDEO IN	Video input connector: Pin jack, Audio input connector: Pin jack (x2) (shared with S VIDEO IN)			
	OUTPUT	Monitor output connector*5: Mini D-sub 15-pin (female), Audio output connector*6: Stereo mini jack (variable out)			
Control signal input/output, Others		RS-232C connector: D-sub 9-pin (male) LAN connector: RJ-45, 10BASE-T/100BASE-TX USB: Type-A, Type-B Microphone input: Mini jack			
Speaker		16 W x 1 (monaural)			
Operating temperature (Operating humidity)		0°C to 40°C / 32°F to 104°F (20% to 80%; no condensation)			
Storage temperature (Storage humidity)		-10°C to +60°C / -14°F to +140°F (20% to 80%)			
Power requirements		AC 100 V to 240 V, 3.2 A to 1.3 A, 50 Hz / 60 Hz			
Power consumption (Lamp mode: High / Standard / Low)	AC 100 V to 120 V	315 W / 251 W*2 / 219 W*2	291 W / 251 W*2 / 219 W*2	308 W / 251 W*2 / 219 W*2	305 W / 251 W*2 / 219 W*2
	AC 220 V to 240 V	302 W / 242 W*2 / 212 W*2	281 W / 242 W*2 / 212 W*2	297 W / 242 W*2 / 212 W*2	294 W / 242 W*2 / 212 W*2
Standby mode power consumption (Standby mode: Standard / Low)	AC 100 V to 120 V	4.9 W / 0.5 W			
	AC 220 V to 240 V	5.1 W / 0.5 W			
Heat dissipation	AC 100 V to 120 V	1075 BTU	993 BTU	1051 BTU	1041 BTU
	AC 220 V to 240 V	1031 BTU	959 BTU	1014 BTU	1004 BTU
Outside dimensions		W 365 x H 138.7 x D 310 mm (W 14 3/8 x H 5 15/32 x D 12 7/32 inches) (without protrusions)			
Mass		4.4 kg / 9 lb 10 oz			
Supplied accessories		RM-PJ8 Remote Commander (1), Lithium battery: CR2025 (1), AC Power Cord (1), Operating Instructions (CD-ROM) (1), Quick Reference Manual (1), Mini D-sub 15-pin cable (1), Projector Station for Network Presentation application (CD-ROM) (1)			
Replacement lamp		LMP-E212			

\*1 The figures are the expected maintenance time and not guaranteed. They will depend on the environment or how the projector is used.

\*2 The values are estimate.

\*3 This value is average.

\*4 Available for the VESA Reduced Blanking signal.

\*5 Not available in standby. From INPUT A and INPUT B.

\*6 Works as an audio switcher function. Output from a selected channel; not available in standby.

## Distributed by

©2014 Sony Corporation. All rights reserved.

Reproduction in whole or in part without written permission is prohibited.

Features and specifications are subject to change without notice.

The values for mass and dimension are approximate.

"SONY", "BrightEra" and "Remote Commander" are trademarks of Sony Corporation.

Sony Corporation.

The terms HDMI and HDMI High-Definition Multimedia Interface,

and the HDMI Logo are trademarks or registered trademarks of

HDMI Licensing LLC in the United States and other countries.

Pixelworks and VueMagic™ are trademark of Pixelworks Inc.

Windows is registered trademarks or trademarks of Microsoft Corporation

in the United States and/or other countries.

Mac and iOS are trademarks of Apple Inc.

Android is a trademark of Google Inc.

Miracast is the trademark or a registered trademark of Wi-Fi Alliance.

All other trademarks are the property of their respective owners.

MK11080V1Y1T14JAN